

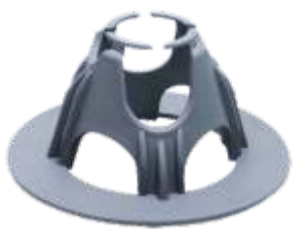
GROUND CHAIRS

The design specifics of our **Ground Bar Chair**.

This chair is designed with the user and highest construction standards in mind. These are built to withstand high loading features include the handy clip on function so you can clip on to the mesh upside down and give the mesh a shake and all the chairs swing into place. These chairs are batch tested and meet the AS/NZS 2425:2015 Standards for bar chairs in reinforced concrete.

Perfect For:

Slab on ground applications, Trench bar supports,
Driveways, Paths, Patios, Civil precast construction.



Code: G25/40
Description: 25mm & 40mm covers.
Bag Qty: 100
Pallet Qty: 9000



Code: G50/65
Description: 50 & 65mm covers.
Bag Qty: 100
Pallet Qty: 6000



Code: G75/90
Description: 75mm & 90mm covers.
Bag Qty: 100
Pallet Qty: 6000



Code: G85/100
Description: 50mm Cover Spacer suits <32mm steel.
Bag Qty: 50
Pallet Qty: 2500



0800 55 33 00

APPLICATIONS

- Slab on Ground, Rib-Raft & Pod.
- Patios, Paths, Driveways
- Trench bar supports
- Civil Precast construction

FEATURES AND BENIFITS

- Clip Style top
- Fits mesh/bar sizes 6-25mm
- Heavy duty stable support.
- Wide base for soft surfaces such as poly pods.

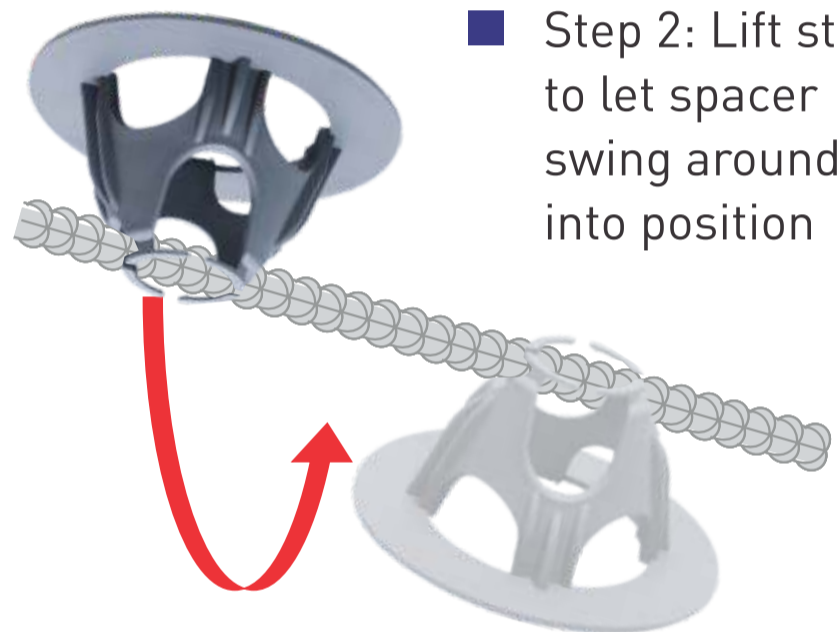
TECHNICAL CHARACTERISTICS

Cover	25 - 100mm
Load	>120
Height Tolerance <75mm	<1mm
Height Tolerance >75mm	<2mm
Deflection under load	<3mm
Openings	20mm<

Meets AS/NZS 2425 for reinforcing steel spacing applications in concrete.
Batch tested meeting minimum requirements.

EVERYDAY APPLICATION

- Step 1: Clip Spacer to Mesh / Bar
- Step 2: Lift steel to let spacer swing around into position



TECHNICAL DIMENSIONS

CODE	FITS BAR	COVER
G25/40	<25mm	25, 40mm
G50/65	<25mm	50, 65mm
G75/90	<25mm	75, 90mm
G85/100	<25mm	85, 100mm

TEST DATA

